

THE LAMMAS SCHOOL

150 Seymour Road, Leyton, London E10 7LX

T. 020 8988 5860

school@thelammas.com | www.lammas-gst.org



**THE LAMMAS
SCHOOL**

Dear Lammas families

At Lammas we have high expectations, and believe in the limitless potential of all our students to achieve excellence. Although the vast majority of our young people meet those expectations, a small number of students struggle to do so and are late to lessons, have issues with uniform and don't always follow the Lammas rules.

In order to maximise students' learning and ensure the wellbeing of all members of our community, we are introducing some adjustments to our behaviour policy:

- a) Students who truant from lessons or are unjustifiably late will receive an automatic consequence of a 50-min after-school "give-back-time" session with a member of the Senior Leadership Team. We will contact families to inform them in advance.
- b) Pupils are expected to wear full school uniform at all times in corridors and in classrooms (including blazer and tie), and avoid banned items such as trainers, jewellery, hoodies, durags and colourful hairbands. These items may be confiscated without warning.
- c) The school is a learning environment; students are expected to behave sensibly in lesson change-over and when leaving and entering the building. Failure to do so contravenes our safety rule and will result in appropriate consequences.
- d) Students who do not adhere to the school's code of conduct may be removed from the lessons and expected to complete work under the supervision of a member of the student care team. Removal from lessons will likely result in consequences with the teacher.
- e) Students who have to stay after school for "give back time" will be collected from their lessons at the end of the day by members of the student care team and escorted to the hall, where they will be directed to their allocated base. Families will be notified in advance if the "give back time" session is likely to exceed 20 minutes.

We have high expectations for our students and work tirelessly to achieve and maintain the standards that our families and the wider community deserve. The intensity and stress that in the last two years have affected us all seem to have taken an especially heavy toll on the resilience of our young people. We rely on your support to ensure that all students at Lammas are successful and the school continues to be a positive learning environment.

With best wishes

Ms C. Vives-Belmonte (Assistant Headteacher)



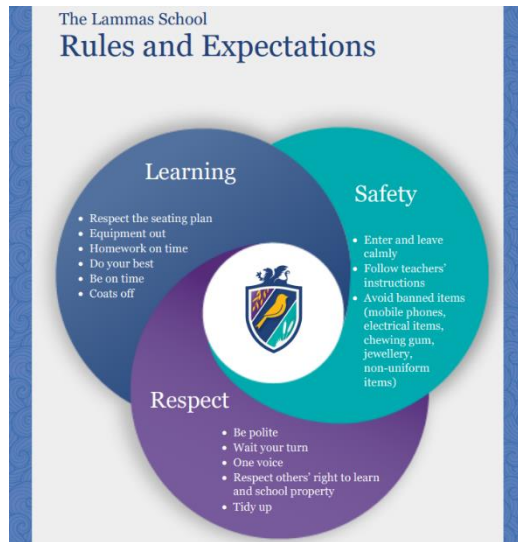
**GRIFFIN
SCHOOLS
TRUST**

A member of Griffin Schools Trust



THE LAMMAS SCHOOL
 150 Seymour Road, Leyton, London E10 7LX
 T. 020 8988 5860
 school@thelammas.com | www.lammas-gst.org

**THE LAMMAS
 SCHOOL**



The Lammas School
Ladder of Consequence

Rule	Incident	Consequence	Actioned by
Learning	Low level disruption Lack of equipment Failure to complete work / homework Lateness to lesson	Restorative conversation ↓ Contact with home ↓ Give back time after school Meeting with CL and Teacher	Teacher Teacher in collaboration with parents
	Significant and persistent disruption	Department re-location ↓ Reflection Room (for single sessions)	Teacher in collaboration with CL
Safety	Walking out of lesson Misuse of mobile phone* Running in the corridor* Use of banned items* Truancy Play fighting	Contact home + give back time ↓ Reflection Room	Teacher in collaboration with CL / HoY
	Bullying Physical assault Fighting Theft	SLT decision on a case by case	HoY in collaboration with SLT
Respect	Inappropriate language Disrespect towards staff Inappropriate use of resources Eating in class	Restorative conversation ↓ Contact with home ↓ Give back time ↓ Loss of social time	Teacher Teacher in collaboration with parents
	Walking away from staff Failure to follow instructions Verbal abuse Rudeness to staff Vandalism	Give back time + contact home ↓ Reflection Room	Teacher in collaboration with HoY

Wisdom | Courage | Leadership